



WE OFFER A FULL RANGE OF PRODUCTION SERVICES, FROM DESIGN CONCEPTION TO DELIVERY, SET-UP, OPERATION AND REMOVAL. OUR TEAM IS EXPERIENCED IN FULFILLING YOUR DESIGNS, OR WORKING FROM SCRATCH TO HELP DEVELOP YOUR PLAN. WE CAN PROVIDE PROFESSIONAL INSTALLATION OR LABOR SUPERVISION OF FIXTURES, SPECIAL EFFECTS, DIMMING, CONTROL, POWER DISTRIBUTION, RIGGING EQUIPMENT, STAGING AND CURTAINS. MANY OF OUR RENTAL FIXTURES ARE AVAILABLE FOR PURCHASE AT CONSIDERABLE DISCOUNTS. CALL US FOR PRICING.

THEATRICAL FIXTURES

PRODUCT NAME WEEK RATE

ELLIPSOIDALS

Includes pipe clamp, color frame, and safety cable

Micro Ellipse, Altman	\$ 15.00
50° Source 4, Strand SL	20.00
36° Source 4, Strand SL	20.00
26° Source 4, Strand SL	20.00
19° Source 4, Strand SL	20.00
14° Source 4	30.00
10° Source 4, Strand SL	30.00
5° Source 4, Strand SL	30.00
90° Source 4, Selecon	30.00
70° Source 4	30.00
15/32 Strand SL Zoom	30.00
23/50 Strand SL Zoom	30.00
Donut	2.00
Pattern Holder	2.00
Handle	3.00
Top Hat	3.00
Color Extender	3.00
Top Hat	3.00
Iris Unit	6.00

FRESNELS

Includes pipe clamp, color frame, and safety cable

3" Strand	\$ 15.00
6" Strand	15.00
8" Strand	20.00
Barndoor, 6"	3.00
Barndoor, 8"	6.00

FOLLOW SPOTS

Lycian Midget (1206)	\$ 150.00
Lycian Short Throw Spot (1266)	250.00
Lycian Long Throw Spot (1267)	250.00
Lycian 1.2k (1275)	350.00
Strong 2k Super Trouper	750.00

PRODUCT NAME WEEK RATE

PARS

Includes pipe clamp, color frame, safety cable

6 Bank - Par 36	\$ 75.00
Source 4 Par	20.00
Ray Lights	15.00
Par 38, 56 or 64	15.00
Swivelpar, 7" or 11"	15.00
Pinspot	10.00
Par 20	10.00
Par 16	10.00
Barndoor for S4 Par, Par 56 or Par 64	3.00

CYC LIGHTING

Includes trunnions or hanging brackets, color frame

1-cell Cyc, Iris or Broad	\$ 20.00
2-cell Cyc, Iris or Broad	30.00
3-cell Cycles, Iris or Broad	40.00
4-cell Broad Cycles	50.00
9-cell T-3 strips (3 circ.)	50.00
6' Mini Strips (3 circ.)	50.00

LOOKING FOR

COMPLETE RENTAL LIST What you see here is a sampling of our most popular items. Want a full list of all of our rental items? Give us a call, e-mail or log onto our website: www.vincentlighting.com.



RENTAL EQUIPMENT

PRODUCT NAME WEEK RATE

LED LIGHTING

Chauvet COLORDash Accent	\$ 20.00
American DJ 16" LED Blacklight	30.00
Coemar Pinlite LED	50.00
Coemar Parlite LED	75.00
Underwater color changer	90.00
Color Kinetics 6' ColorBlaze Striplight	200.00
Color Kinetics Color Blast® TR (wired)	75.00
Color Kinetics iV Blast® (wired) NEW	75.00
Color Kinetics Color Blast TR (wireless)	150.00
Color Kinetics iV Blast (wireless) NEW	150.00
Vari-Lite VLX™ automated luminaire NEW	300.00

AUTOMATED FIXTURES

High End DL1™	\$ 995.00
High End Catalyst® Media Server	995.00
SHoWGUN™	500.00
Vari-Lite® VL3500™ spot luminaire	395.00
Vari-Lite VL3500 wash luminaire	350.00
Vari-Lite VL3000™ spot luminaire	350.00
Vari-Lite VL3000 wash luminaire	300.00
Vari-Lite VLX™ wash LED luminaire NEW	300.00
Vari-Lite VL2500™ spot luminaire	295.00
Vari-Lite VLS2500 wash luminaire NEW	250.00
Vari-Lite VL2000™ spot luminaire	250.00
Vari-Lite VL2000 wash luminaire	225.00
Vari-Lite VL1000TS™	195.00
Vari-Lite VL500TD™	150.00
Cyberlight SV	250.00
ColorMerge™ Dichroic Color Mixer	150.00
Technobeam	150.00
Studio Color 250 wash luminaire	150.00
Studio Spot 250 spot luminaire	200.00
CXI Color Mixing Scroller	75.00
Atomic Color	75.00
Color Scroller 7.5"	50.00
Custom gel strings	60.00

ENCLOSURES

Tempest Tornado 2300 NEW	\$ 200.00
---------------------------------	-----------

DIMMING & CONTROL

PRODUCT NAME WEEK RATE

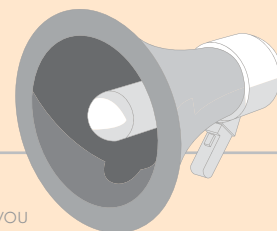
DIMMING

4 x 600W dimmer pack	\$ 45.00
4 x 600W dimmer pack with wireless DMX	75.00
NSI 4 ch. 4.8kw pack	90.00
CD80 6 x 6kW dimmer pack	200.00
CD80 12 x 2.4kW dimmer pack	200.00
CD80 24 x 1.2kW dimmer pack	250.00
CD80 24 x 2.4kW dimmer pack	300.00
48 x 2.4kW rolling rack	500.00

CONTROL

Strand 100 Series 12 ch. (12/24)	\$ 50.00
12 ch. Mantrix MX	75.00
Strand 200 Series (12/24)	75.00
Lightronics TL 3216 (16/32)	75.00
NSI 7016 (16/32)	75.00
24 ch. Mantrix MX	100.00
Strand 200 Series (24/48)	125.00
Lightronics 12/24 wireless DMX	150.00
Technobeam LCD controller	150.00
48 ch. Mantrix MX (48/96)	200.00
Microvision	250.00
LBX	250.00
Strand presetPalette (32/64)	300.00
Strand PaletteVL	300.00
Pearl 2000	400.00
Hog 1000	400.00
Mini LightPalette 520	400.00
LightPalette VL	500.00
Road Hog	500.00
grandMA Ultralight	500.00
Hog iPC	600.00
grandMA Light	700.00
Virtuoso DX	800.00
grandMA Console	800.00
grandMA NSP (network signal processor)	300.00
MLP 520 Remote Video	75.00
UPS	75.00
Line conditioner	50.00

YOU SAID



Mike B. Thanks for all the excellent service you have provided to our school. Everyone at Vincent that I have met over the years is the best. I appreciate the honesty and professionalism from each individual in all of the departments in which I have had the pleasure to encounter.

PRODUCT NAME WEEK RATE

SPLITTERS AND INTERFACES

Opto Isolator Splitter - 2 way	\$ 25.00
Opto Isolator Splitter - 5 way	50.00
Opto Isolator Splitter - 11 way	75.00
Dove MTX-DE (AMX, DMX)	50.00
Gray Interface (AMX, DMX)	50.00
Gray Ultimate (AMX, DMX, CMX, ECMUX)	75.00
Fleenor 2-2-1 Combine Units	75.00
DMX Relay	75.00
DMX A/B Switch	75.00
Wireless DMX Receiver	100.00
Wireless DMX Transmitter	150.00

CABLE

PRODUCT NAME WEEK RATE

STAGE PIN CABLE

100' GP 12/3	\$ 5.00
50' GP 12/3	2.50
25' GP 12/3	2.00
10' GP 12/3	2.00
5' GP 12/3	2.00
Two-fer	2.00
Three-fer	3.00

EDISON CABLE

100' GR (all gauges)	\$ 5.00
50' GR (all gauges)	2.50
25' GR (all gauges)	2.00
10' GR (all gauges)	2.00
GR Six-fer Block (plug-in strip)	3.00
GR Quad box	2.00
GR Three-fer Block (cube tap)	1.00
50' E-String	6.00
25' E-String	3.00

MULTICABLE

100' Socapex 20A	\$ 35.00
50' Socapex 20A	17.50
25' Socapex 20A	8.75
Soca(m) to GP(f)	15.00
Soca(f) to GP(m)	15.00
100' Socapex 10A	30.00
50' Socapex 10A	15.00
Socapex Two-fer	5.00

PRODUCT NAME WEEK RATE

ADAPTERS

GP(f) to GR(m)	\$ 2.00
GP(m) to GR(f)	2.00
GP(f) to GTL(m) new style	3.00
GTL(f) new style to GP(m)	3.00
GP(f) to GTL(m) old style	3.00
GTL(f) old style to GP(m)	3.00

FEEDER

100' 4/0 Feeder, per leg	\$ 35.00
50' 4/0 Feeder, per leg	17.50
10' 4/0 Feeder, per leg	3.50
6' 4/0 Feeder, per leg	2.00
100' 2/0 Feeder, per leg	30.00
50' 2/0 Feeder, per leg	15.00
10' 2/0 Feeder, per leg	3.00
100' #2 Feeder, per leg	20.00
50' #2 Feeder, per leg	10.00
25' #2 Feeder, per leg	5.00
Cable Cover (5 channel)	20.00
Cable Cover (dropout)	5.00

RIGGING & HARDWARE

PRODUCT NAME WEEK RATE

TRUSS

2.5' x 12" Box Truss	\$ 25.00
5' x 12" Box Truss	35.00
10' x 12" Box Truss	50.00
10' Circular Truss - 12" Box	300.00
20' Circular Truss - 12" Box	600.00
30' Circular Truss - 12" Box	900.00
40' Circular Truss - 12" Box	1,200.00
Pre-rig Truss, empty	100.00
Pre-rig Truss, with PARs	250.00
12" grapples	15.00
12" corner blocks	35.00
Pre-rig corner block	50.00
12" articulating plate	50.00
Truss ladder 30'	75.00

MOTORS AND LIFTING

1-ton chain motor	\$ 150.00
1/2-ton chain motor	120.00
25' Super Tower	150.00
Block and Fall 50'	30.00
Wall Hauler with rope	15.00
Airwall Hanger	15.00

RENTAL EQUIPMENT

SOFT GOODS

PRODUCT NAME WEEK RATE

FABRIC

Cyc 50' x 20' (Blue)	\$ 150.00
40' Spandex circle	75.00
Borders 50' x 6' (Black)	25.00
Teaser 18" x 40' (Black)	25.00
Curtain 12' x 20' (Black)	75.00
Curtain 12' x 25' (Black)	75.00
Fiber Optic panel 16' x 20'	500.00
Fiber Optic panel 6' x 22'	300.00

Panels include two modified High End trackspots per panel.

SPECIAL EFFECTS

PRODUCT NAME WEEK RATE

FOG AND HAZE

Rosco Alpha 900	\$ 60.00
High End F100	150.00
Ultratec Stagefogger	150.00
Rosco Delta 3000	200.00
Martin Roadie XStream	300.00
<i>Fog Fluid sold separately. See page 17.</i>	
Pea Souper (dry ice)	75.00
Aqua Fog 3300 (dry ice)	225.00
SS6000 (dry ice)	400.00
<i>Dry Ice sold separately.</i>	
H175	150.00
Radiance Hazer	150.00
Hazemaker	250.00
Space Hazer	250.00
DF 50	275.00
Hazemaster	350.00

Haze Fluid sold separately. See page 17.

WIND

Hurricane Fans	\$ 100.00
REFan II	75.00
20" Round	30.00
Clip On	15.00

BLACKLIGHT

8" UV Fresnel	\$ 250.00
Nocturn N400 blacklight	150.00
American DJ 16" LED Blacklight	30.00
Double Tube blacklight	15.00

PRODUCT NAME

WEEK RATE

STROBES, BEACONS

Curtain Strobes	\$ 5.00
Cannon Strobes	60.00
Superstrobes	90.00
Dataflash	90.00
S4 Leko Strobe	90.00
Atomic 3000	120.00
Police Beacon	30.00

ROTATORS

EFX II	\$ 150.00
GAM FilmFX	90.00
Loops: heavy rain, fluffy clouds, streaky clouds, fire/waves	5.00
Gobo rotators	60.00
Rosco FX Rotator	50.00
Motorized Color Wheel	15.00

MIRROR BALLS

48" Mirror Ball w/motor	\$ 200.00
36" Mirror Ball w/motor	150.00
20" Mirror Ball w/motor	50.00
12" Mirror Ball w/motor	25.00
8" Mirror Ball w/motor	15.00

MISCELLANEOUS EFFECTS

DMX Iris	\$ 75.00
Rosco ImagePro	30.00
<i>Slides not included.</i>	
LeFlame with bowl	30.00
Abyss Jr.	15.00
AquaSplash	30.00
Snow Machine	100.00
<i>Snow Fluid sold separately. See page 15.</i>	
Bubble Machine	30.00
Bubble Master	75.00
<i>Bubble fluid sold separately.</i>	
Confetti Volcano	100.00
Confetti Cannon	50.00
32" Celebration Launcher	15.00
<i>Confetti sold separately.</i>	

COMMUNICATIONS

PRODUCT NAME

WEEK RATE

INTERCOM/RADIOS

CS-210 Main Station	\$ 60.00
Remote Station	30.00
<i>Includes headset, beltpack, XLR.</i>	
Headset or Beltpack Separate	15.00

FILM AND VIDEO

PRODUCT NAME DAILY RATE

HMI PAR LIGHTING

Includes scrim set, barndoor, lens kit, head to ballast cable, electronic flicker free/silent selectable ballasts.

4kW	\$ 400.00
2.5kW	285.00
1.2kW	135.00
575W	115.00
400W Joker	115.00
200W	90.00

HMI FRESNEL LIGHTING

Includes scrim set, barndoor, head to ballast cable, electronic flicker free/silent selectable ballasts.

1.2kW	\$ 125.00
575W	105.00

QUARTZ FRESNEL LIGHTING

5kW 10"	\$ 55.00
2kW 7"	40.00
1kW 5"	35.00
650w 5"	25.00
500W 3.5"	20.00
300W 3.5"	20.00

QUARTZ OPEN FACE LIGHTING

2kW Blonde	\$ 35.00
1kW Redhead	30.00
650W Arri	25.00
150W Microfill	10.00

SUN GUNS

Includes: 2 batteries, charger, hand grip, mounting clip, soft box, tungsten filter.

50W HMI Sun Gun Kit	\$ 100.00
---------------------	-----------

KINO FLO SYSTEMS

4-foot 4 bank	\$ 70.00
4-foot 2 bank	40.00
3200° or 5500° tube only	8.00

CHIMERA LIGHTBANKS

Video Pro	\$ 40.00
Quartz	50.00
Daylight	50.00

PRODUCT NAME

DAILY RATE

DOLLY AND TRACK

Doorway dolly	\$ 40.00
Track wheels for dolly	25.00
8' Straight track	12.50
8' Curved track	12.50
4' Straight track	7.00
Cribbing	4.00
Wedges	4.00

GRIP EQUIPMENT

Grip stands	
40" Century stand	\$ 5.00
20" Century stand	3.00
2.5" Grip Head w/single arm	2.50
2.5" Grip Head only	1.25
40" Extension Arm only	1.25
4.5" Grip Head only	3.50
HiHi Overhead Stand w/wide base	10.00
HiHi Overhead Roller Stand	10.00
Light Stands	
Premie Baby	2.00
Beefy Baby	3.00
Beefy Baby Triple Riser	3.00
Jr. Low Boy	3.00
Double Riser Combo	4.00
Triple Riser Combo	4.00
Double Riser Roller	5.00
PoleCat	15.00
Airwall Hanger Kit	5.00
Reflectors & mirrors	35.00
Apple boxes - Full, 1/2, 1/4, pancake	4.00
Sandbags - 25 lb., 15 lb.	5.00
Baby & Junior Hangers & Mounting Accessories	5.00

ELECTRICAL DISTRIBUTION

Generator, Weber 1400A	\$ 600.00
Generator, 500A	400.00
Distro box 600A pass thru 3 phase	70.00
Distro box 400A pass thru 1 phase	50.00
100A snack box	20.00
60A Hollywood box	15.00
2/O 50', per leg	12.00
4-wire banded #2 entertainment cable	25.00
5-wire banded #2 entertainment cable	30.00
100A bates ext 50'	10.00
100A bates ext 25'	8.00
220V 100A bates ext 50'	10.00
60A bates ext 50'	8.00
60A bates ext 25'	5.00
12/3 Stingers 50'	3.00
12/3 Stingers 25'	2.00